

HYPERION SOLUTIONS
STRATEGIC FINANCE™
RELEASE 9.3

NEW FEATURES GUIDE



CONTENTS IN BRIEF

New Modeling Features	2
Ease-of-Use Enhancements	3
DB2 Support for Extended Analytics	4

New Modeling Features

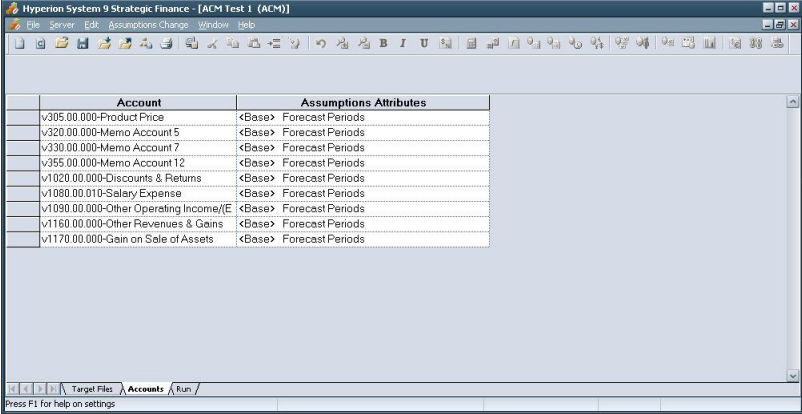
Fiscal-Year-End Conversion

The fiscal-year-end conversion utility helps you change the fiscal year end of a company's strategic financial models. Before the release of this feature, the fiscal year end in financial models could be changed only through the tedious process of creating models with new fiscal year ends and manually copying data from existing models to the new models. Now, you can change the fiscal year end with the push of a button.



Assumptions Change Manager

Assumptions Change Manager maintains account information. You select one base entity as the source for all account information, and you select multiple target entities that receive copies of that account information. This is particularly useful to help you ensure uniformity between financial models.

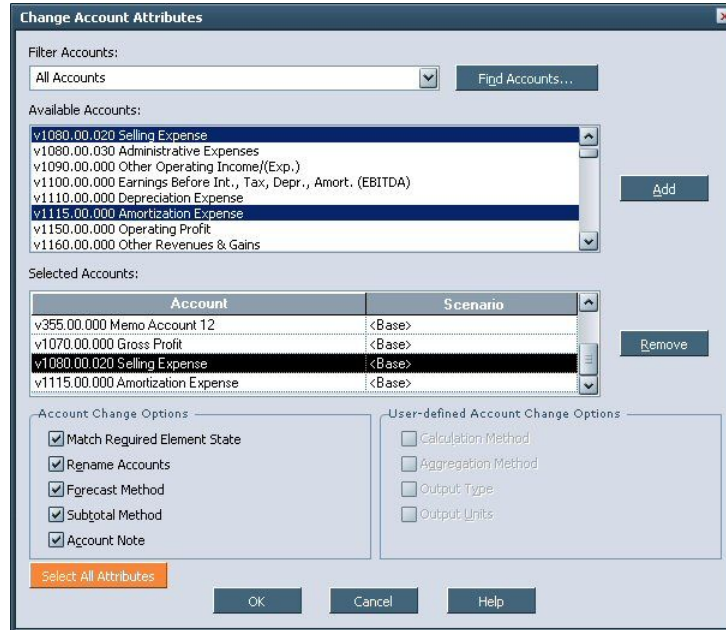


Ease-of-Use Enhancements

Entity Change Manager Enhancements

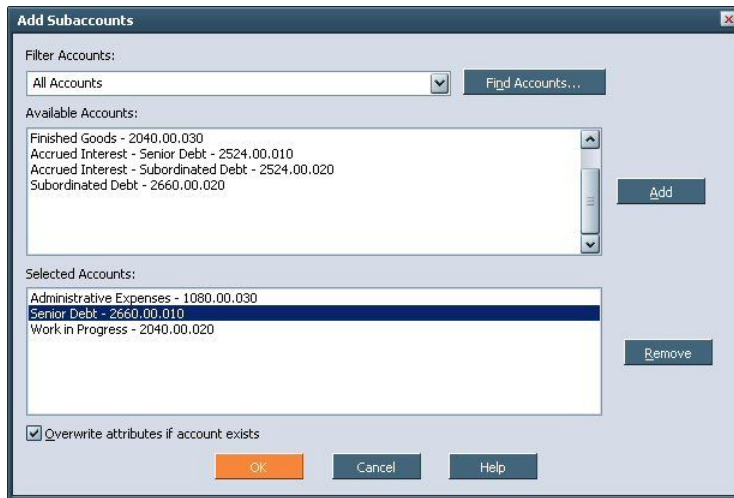
Selection of All Account Attributes

The Change Account Attributes window now includes the Select All Attributes button to simplify selection of Account Change Options.



Overwrite of Existing Account Attributes in Subaccounts

Now, if two subaccounts of the same name are located in two different models, and you want to copy new subaccount attributes from one model to the other, you can use the new **Overwrite attributes if account exists** option in the Add Subaccounts window.

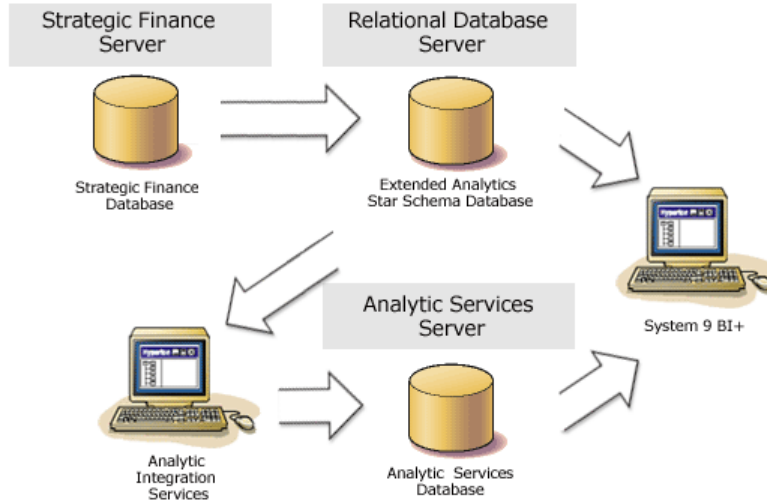


Output Management

You can save outputs for user-defined scenarios within entities. Entity Change Manager can now apply those settings to multiple entities simultaneously.

DB2 Support for Extended Analytics

Extended Analytics now exports to DB2 databases.



COPYRIGHT NOTICE